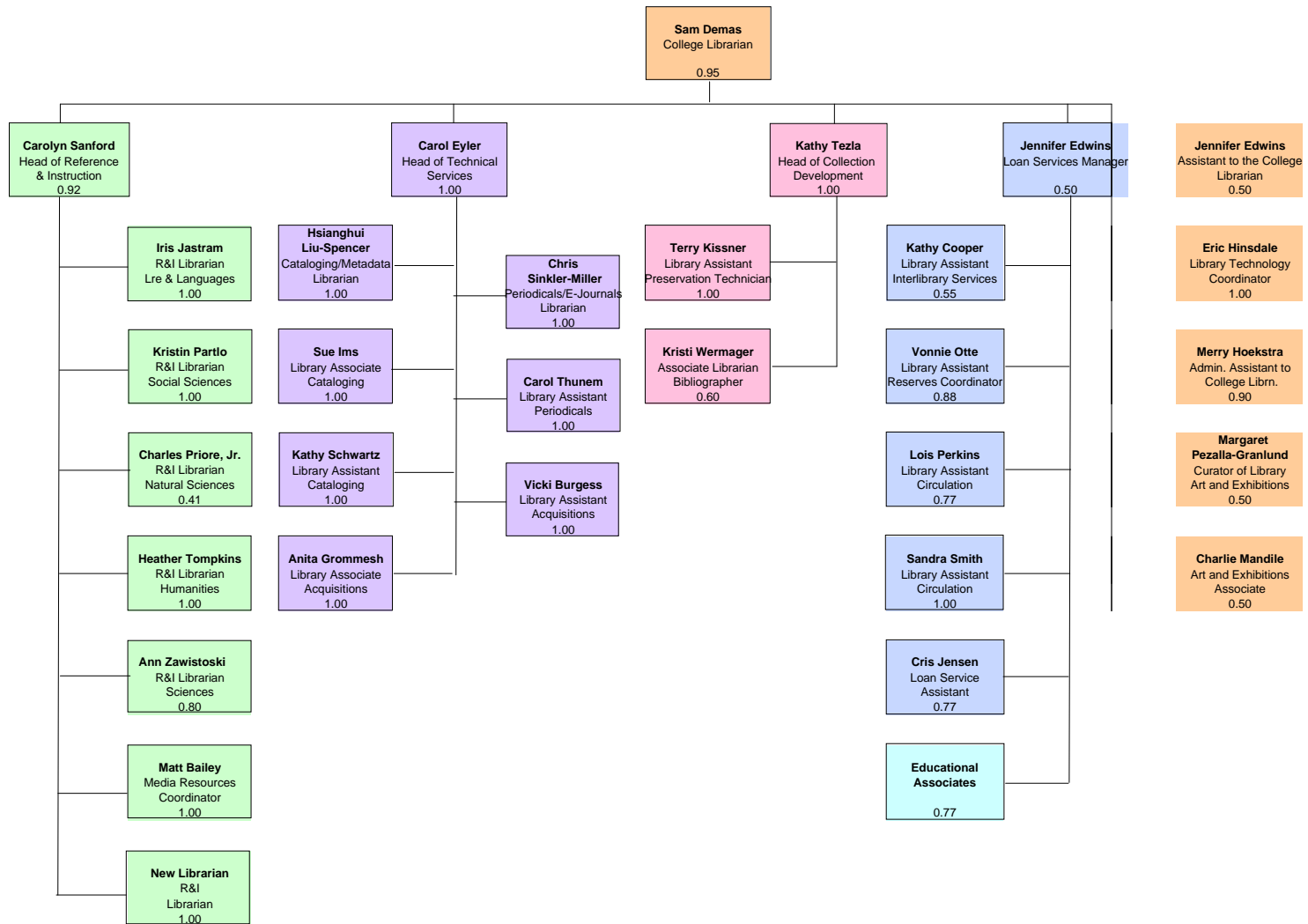


Carleton College - Gould Library

Staff Organization Chart - 10/23/2007



FTE Chart:

Administrative	4.35
Loan Services	5.24
Reference & Instruction	7.13
Technical Services	8.00
Collection Development	2.60
Total	27.32

Librarians	13.68
Bi-Weekly	9.37
Educational Associates	0.77
Exempt	3.50
Total	27.32