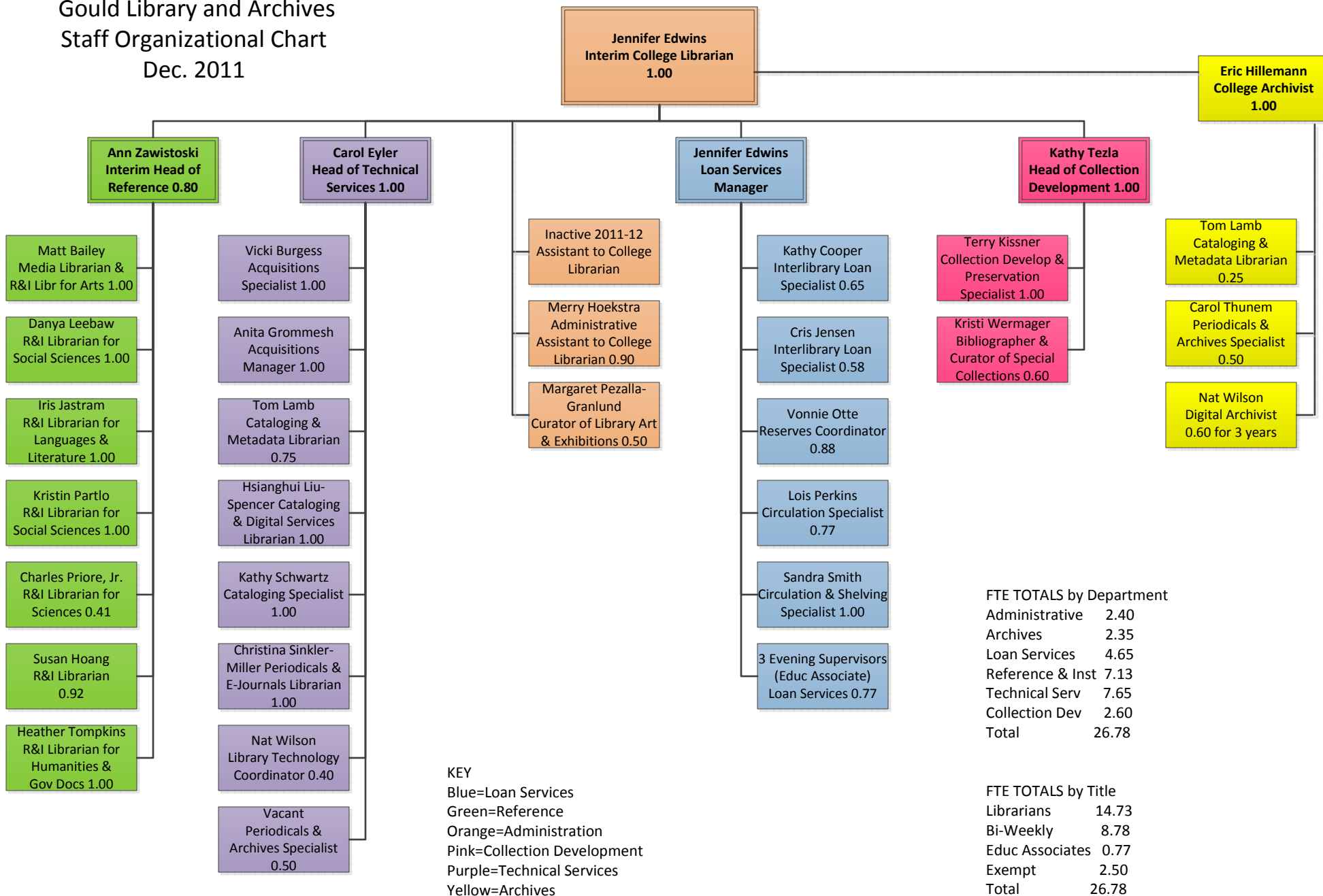


Gould Library and Archives Staff Organizational Chart Dec. 2011



FTE TOTALS by Department

Administrative	2.40
Archives	2.35
Loan Services	4.65
Reference & Inst	7.13
Technical Serv	7.65
Collection Dev	2.60
Total	26.78

FTE TOTALS by Title

Librarians	14.73
Bi-Weekly	8.78
Educ Associates	0.77
Exempt	2.50
Total	26.78

KEY
 Blue=Loan Services
 Green=Reference
 Orange=Administration
 Pink=Collection Development
 Purple=Technical Services
 Yellow=Archives