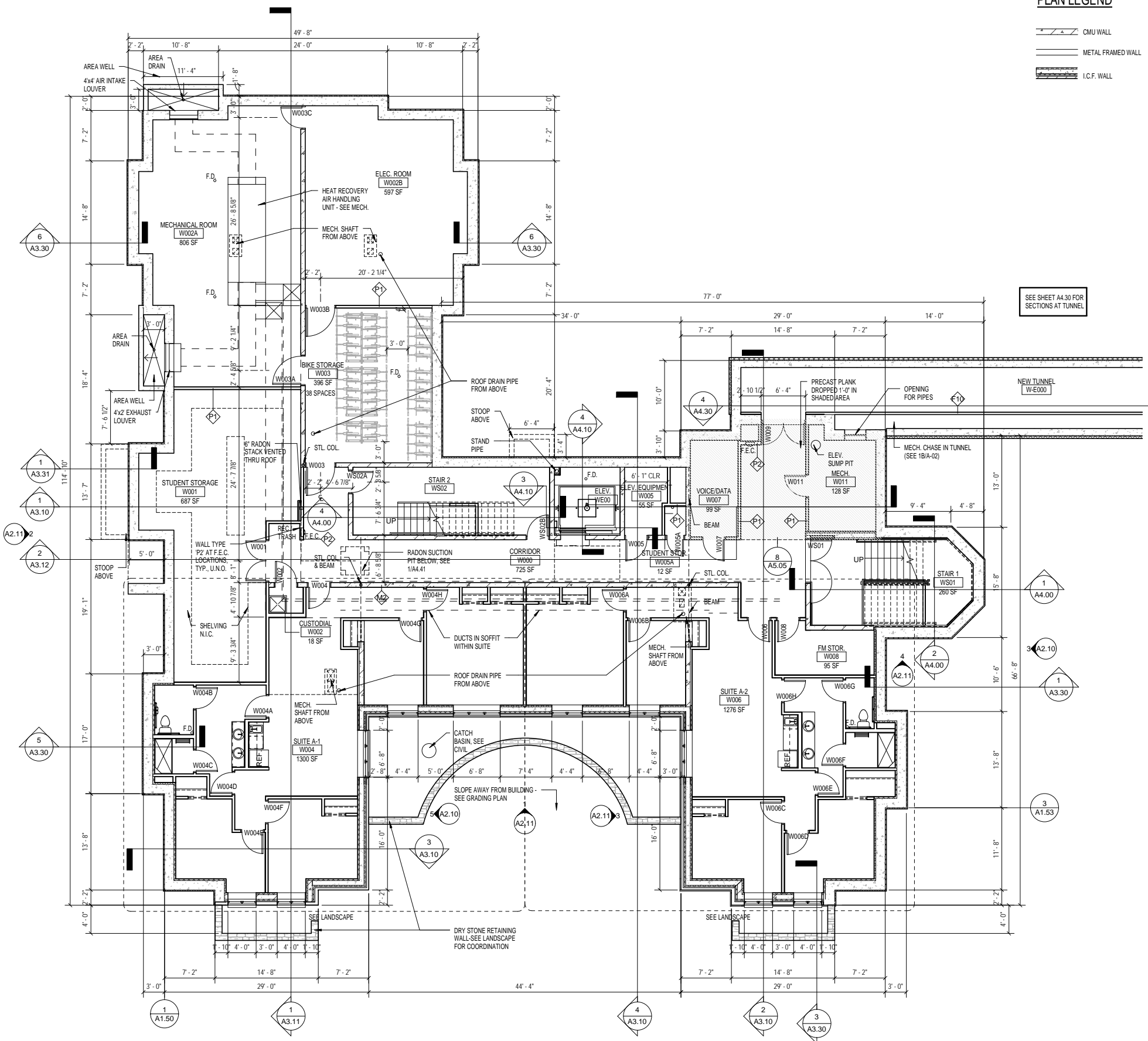


C:\Documents and Settings\tob\Desktop\Revit\New Carleton\070353_Carleton_D_centrol_tob.rvt
4/30/2008 8:15:59 AM



PLAN LEGEND

- CMU WALL
- METAL FRAMED WALL
- I.C.F. WALL

GENERAL NOTES:

1. Notify architect immediately of any discrepancies.
2. Structural, mechanical, and electrical symbols may differ from architectural. See respective sections and/or drawings for definitions.
3. Wherever openings are cut through fire rated partitions, it shall be the responsibility of the contractor who made the cut to patch and repair any openings to maintain the integrity of the fire rating. Fireproofing shall be unperced. Any contractor penetrating the fireproofing shall be required to replace fireproofing to the original condition and fire rating, at their expense. General contractor shall be responsible to confirm all patches are appropriate and maintain the required fire rating. Equipment unit dimensions (for all trades) are for product description only. Verify exact size and clearances with manufacturer.
4. All dimensions pertaining to mechanical or electrical services or equipment shall be verified with their respective trades.
5. Provide metal blocking at all wall-mounted equipment, door stops, accessories, etc., unless noted otherwise.
6. For fire ratings, refer to Code Analysis on Sheet G0.01, the Wall Types on A5.00, and the Floor-Ceiling-Roof Assemblies on A5.05.
7. General contractor to coordinate proposed locations & sizes of all chases for mechanical shafts with subcontractor & architect, prior to installation.
8. Dimensions are taken to (unless noted otherwise):
-face of stud at interior walls
-centerline of party walls
-outside face of sheathing (F.O.S.) or face of masonry (F.O.S.) at exterior walls.
9. Plumbing pipes to have escutcheon plates.
10. Wall types are designated with , see sheet A5.00 for wall types.
11. See enlarged plans for wall types, door tags, and additional dimensions at stairs, elevators, unit plans, and other areas with enlarged floor plans.
12. See sheet A7.10 for Room Finish Schedule.
13. See sheet A7.00 for Door Types and Door Schedules.
14. See sheet A5.30 for window types, and Building Elevations for window locations.
15. See A6.01 for typical interior wall framing and acoustic sealant details.
16. Concealed spaces shall be filled full w/ insulation or protected using other methods listed in IBC.
17. Finish surface of stoops shall slope 1/4" per foot down and away from building and perpendicular to the door it serves.
18. See building elevations for window types.
19. All furniture provided by owner.
20. Washers and dryers shall be provided by owner, installed by contractor.

SEE SHEET A4.30 FOR SECTIONS AT TUNNEL

Carleton College

No	Date	Revision
	05-01-2008	100% COORDINATION REVIEW
	03-24-2008	DESIGN DEVELOPMENT
	03-04-2008	NORTHFIELD C.U.P. SUBMITTAL
	01-21-2008	SCHEMATIC DESIGN

PRELIMINARY
NOT FOR CONSTRUCTION
05-01-2008

COPYRIGHT 2008 BY LHB, INC. ALL RIGHTS RESERVED

PROJECT TITLE:
**CARLETON COLLEGE
STUDENT RESIDENCE**

1 North College Street
Northfield, MN 55057

DRAWING TITLE:
**WEST BUILDING
BASEMENT PLAN**

FLOOR ELEVATIONS:

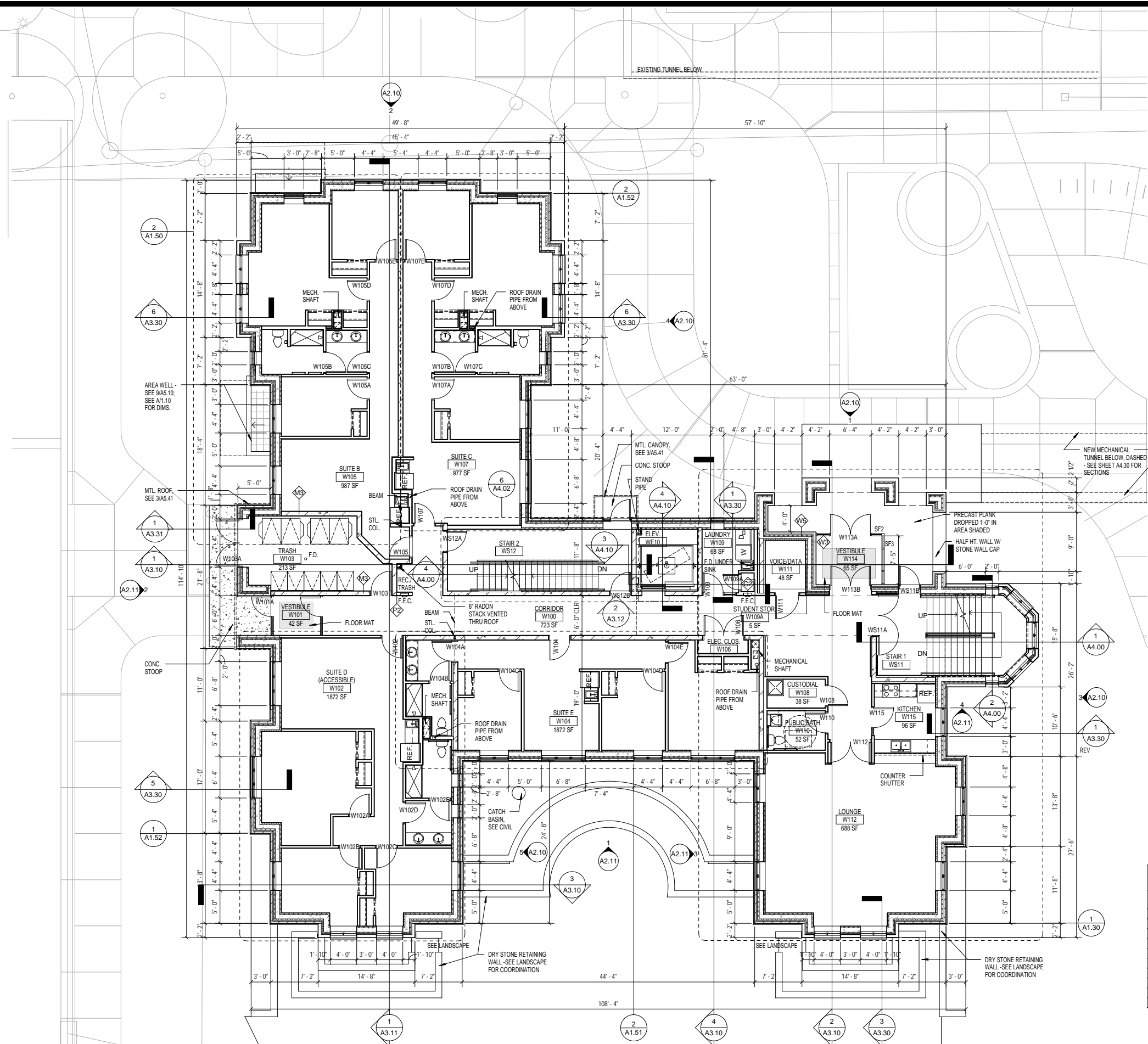
	WEST BUILDING	EAST BUILDING
ROOF BRG.	140'-8"	141'-4"
4TH FLR.	FFE 131'-7"	132'-3"
	TOP 131'-4"	132'-0"
3RD FLR.	FFE 121'-7"	122'-3"
	TOP 121'-4"	122'-0"
2ND FLR.	FFE 111'-7"	112'-3"
	TOP 111'-4"	112'-0"
1ST FLR.	FFE 100'-3" (= 942.50 CIVIL)	100'-3" (= 941.84 CIVIL)
	TOP 100'-0" (= 942.25 CIVIL)	100'-0" (= 941.59 CIVIL)
BASEMENT	TOS 89'-4" (= 931.58 CIVIL)	88'-0" (= 929.59 CIVIL)

FFE = FINISHED FLOOR ELEVATION
TOP = TOP OF PLANK
TOS = TOP OF SLAB

1 WEST BUILDING BASEMENT PLAN
1/8" = 1'-0"

FILE:
DRAWN BY: Author
CHECKED BY: Checker
PROJ. NO: 070353
DRAWING NO: **A1.10**

C:\Documents and Settings\tob\Desktop\Revit\New Carleton\070.35.3_Carleton_D_centrol_tob.rvt
4/30/2008 8:15:38 AM



1 WEST BUILDING FIRST FLOOR PLAN
1/8" = 1'-0"

GENERAL NOTES:

1. Notify architect immediately of any discrepancies.
2. Structural, mechanical, and electrical symbols may differ from architectural. See respective sections and/or drawings for definitions.
3. Whenever openings are cut through fire rated partitions, it shall be the responsibility of the contractor who made the cut to patch and repair any openings to maintain the integrity of the fire rating. Fireproofing shall be unimpeded. Any contractor penetrating the fireproofing shall be required to replace fireproofing to the original condition and fire rating, at their expense. General contractor shall be responsible to confirm all patches are appropriate and maintain the required fire rating.
4. Equipment unit dimensions (for all trades) are for product description only. Verify exact size and clearances with manufacturer.
5. All dimensions pertaining to mechanical or electrical services or equipment shall be verified with their respective trades.
6. Provide metal blocking at all wall-mounted equipment, door stops, accessories, etc., unless noted otherwise.
7. For fire ratings, refer to Code Analysis on Sheet G0.01, the Wall Types on A5.00, and the Floor-Ceiling-Roof Assemblies on A5.05.
8. General contractor to coordinate proposed locations & sizes of all chases for mechanical shafts with subcontractor & architect, prior to installation.
9. Dimensions are taken to (unless noted otherwise):
-face of stud at interior walls
-centerline of party walls
-outside face of sheathing (F.O.S.) or face of masonry (F.O.S.) at exterior walls.
10. Plumbing pipes to have escutcheon plates.
11. Wall types are designated with \diamond ; see sheet A5.00 for wall types.
12. See enlarged plans for wall types, door tags, and additional dimensions at stairs, elevators, unit plans, and other areas with enlarged floor plans.
13. See sheet A7.10 for Room Finish Schedule.
14. See sheet A7.00 for Door Types and Door Schedules.
15. See sheet A3.30 for window types, and Building Elevations for window locations.
16. See A6.01 for typical interior wall framing and acoustic sealant details.
17. Concealed spaces shall be filled full w/ insulation or protected using other methods listed in IBC.
18. Finish surface of stoops shall slope 1/4" per foot down and away from building and perpendicular to the door it serves.
19. See building elevations for window types.
20. All furniture provided by owner.
21. Washers and dryers shall be provided by owner, installed by contractor.

PLAN LEGEND

- CMU WALL
- METAL FRAMED WALL
- I.C.F. WALL

FLOOR ELEVATIONS:

	WEST BUILDING	EAST BUILDING
ROOF BRG.	140'-8"	141'-4"
4TH FLR.	FFE 131'-7"	132'-3"
TOP	131'-4"	132'-0"
3RD FLR.	FFE 121'-7"	122'-3"
TOP	121'-4"	122'-0"
2ND FLR.	FFE 111'-7"	112'-3"
TOP	111'-4"	112'-0"
1ST FLR.	FFE 100'-3" (= 942.50' CIVIL)	100'-3" (= 941.84' CIVIL)
TOP	100'-0" (= 942.25' CIVIL)	100'-0" (= 941.59' CIVIL)
BASEMENT	TOS 89'-4" (= 931.58' CIVIL)	88'-0" (= 929.59' CIVIL)

FFE = FINISHED FLOOR ELEVATION
TOP = TOP OF PLANK
TOS = TOP OF SLAB

Carleton College

No	Date	Revision
	05-01-2008	100% COORDINATION REVIEW
	03-24-2008	DESIGN DEVELOPMENT
	03-04-2008	NORTHFIELD C.U.P. SUBMITTAL
	01-21-2008	SCHEMATIC DESIGN

PRELIMINARY
NOT FOR CONSTRUCTION
05-01-2008

COPYRIGHT 2008 BY LHB, INC. ALL RIGHTS RESERVED

PROJECT TITLE:
CARLETON COLLEGE STUDENT RESIDENCE

1 North College Street
Northfield, MN 55057

DRAWING TITLE:
WEST BUILDING FIRST FLOOR PLAN

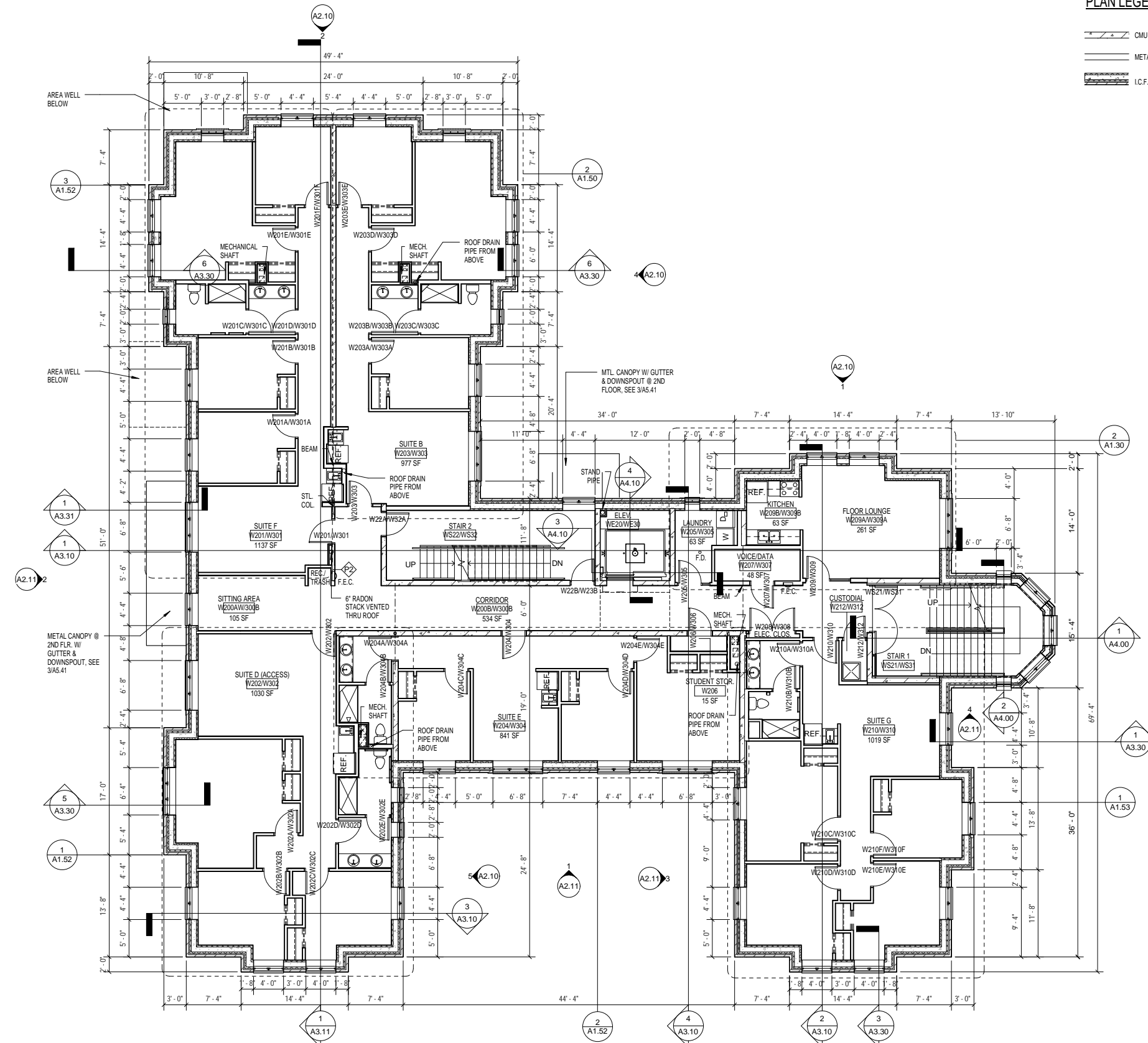
FILE:
DRAWN BY: Author
CHECKED BY: Checker
PROJ. NO: 070353
DRAWING NO: **A1.11**



250 Third Avenue North
Suite 450
Minneapolis, MN 55401
TEL 612/338-2029
FAX 612/338-2088
http://www.LHBcorp.com

MINNEAPOLIS ■ DULUTH





PLAN LEGEND

- CMU WALL
- METAL FRAMED WALL
- I.C.F. WALL

GENERAL NOTES:

1. Notify architect immediately of any discrepancies.
2. Structural, mechanical, and electrical symbols may differ from architectural. See respective sections and/or drawings for definitions.
3. Wherever openings are cut through fire rated partitions, it shall be the responsibility of the contractor who made the cut, to patch and repair any openings to maintain the integrity of the fire rating. Fireproofing shall be unperceivable. Any contractor penetrating the fireproofing shall be required to replace fireproofing to the original condition and fire rating, at their expense. General contractor shall be responsible to confirm all patches are appropriate and maintain the required fire rating.
4. Equipment unit dimensions (for all trades) are for product description only. Verify exact size and clearances with manufacturer.
5. All dimensions pertaining to mechanical or electrical services or equipment shall be verified with their respective trades.
6. Provide metal blocking at all wall-mounted equipment, door stops, accessories, etc., unless noted otherwise.
7. For fire ratings, refer to Code Analysis on Sheet G0.01, the Wall Types on A5.00, and the Floor-Ceiling-Roof Assemblies on A5.05.
8. General contractor to coordinate proposed locations & sizes of all chases for mechanical shafts with subcontractor & architect, prior to installation.
9. Dimensions are taken to (unless noted otherwise):
-face of stud at interior walls
-centerline of party walls
-outside face of sheathing (F.O.S.) or face of masonry (F.O.S) at exterior walls.
10. Plumbing pipes to have escutcheon plates.
11. Wall types are designated with ; see sheet A5.00 for wall types.
12. See enlarged plans for wall types, door tags, and additional dimensions at stairs, elevators, unit plans, and other areas with enlarged floor plans.
13. See sheet A7.10 for Room Finish Schedule.
14. See sheet A7.00 for Door Types and Door Schedules.
15. See sheet A5.30 for window types, and Building Elevations for window locations.
16. See A6.01 for typical interior wall framing and acoustic sealant details.
17. Concealed spaces shall be filled full w/ insulation or protected using other methods listed in BC.
18. Finish surface of stoops shall slope 1/4" per foot down and away from building and perpendicular to the door it serves.
19. See building elevations for window types.
20. All furniture provided by owner.
21. Washers and dryers shall be provided by owner, installed by contractor.

Carleton College

No	Date	Revision
	05-01-2008	100% COORDINATION REVIEW
	03-24-2008	DESIGN DEVELOPMENT
	03-04-2008	NORTHFIELD C.U.P. SUBMITTAL
	01-21-2008	SCHEMATIC DESIGN

PRELIMINARY
NOT FOR CONSTRUCTION
05-01-2008

COPYRIGHT 2008 BY LHB, INC. ALL RIGHTS RESERVED

PROJECT TITLE:
**CARLETON COLLEGE
STUDENT RESIDENCE**

1 North College Street
Northfield, MN 55057

DRAWING TITLE:
**WEST BUILDING
SECOND & THIRD
FLOOR PLANS**

FILE:
DRAWN BY: Author
CHECKED BY: Checker
PROJ. NO: 070353
DRAWING NO:

A1.12

1 WEST BUILDING SECOND FLOOR PLAN & THIRD FLOOR PLAN
1/8" = 1'-0"



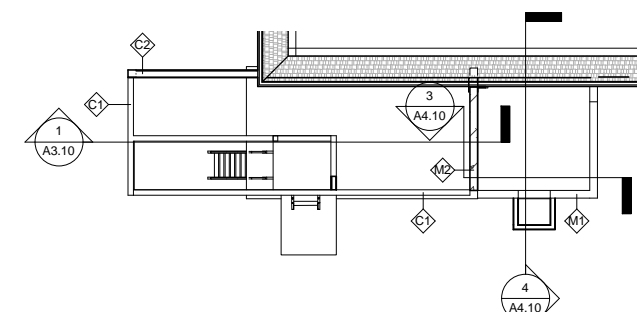


PLAN LEGEND

- CMU WALL
- METAL FRAMED WALL
- I.C.F. WALL

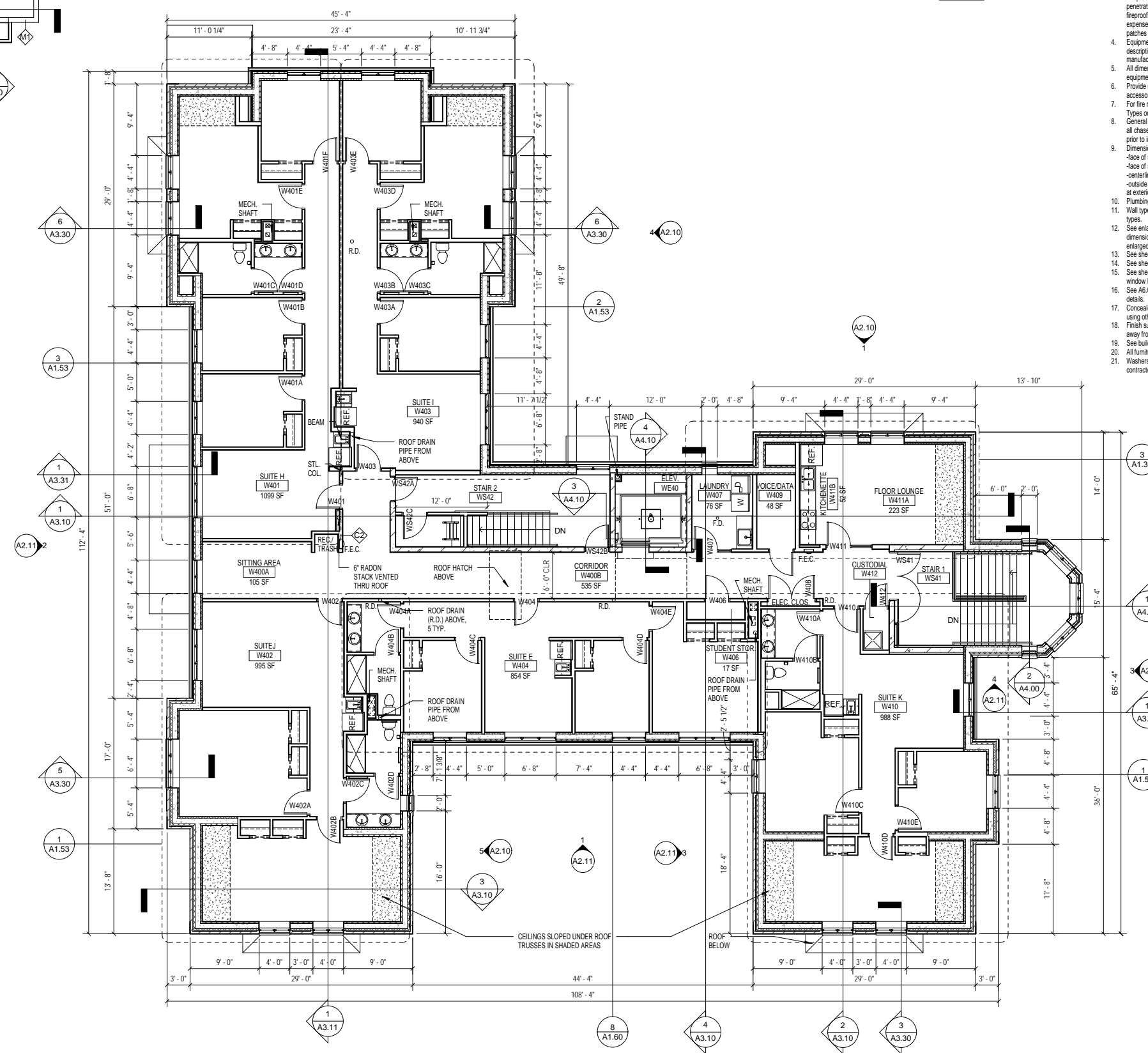
GENERAL NOTES:

1. Notify architect immediately of any discrepancies.
2. Structural, mechanical, and electrical symbols may differ from architectural. See respective sections and/or drawings for definitions.
3. Wherever openings are cut through fire rated partitions, it shall be the responsibility of the contractor who made the cut to patch and repair any openings to maintain the integrity of the fire rating. Fireproofing shall be unperished. Any contractor penetrating the fireproofing shall be required to replace fireproofing to the original condition and fire rating, at their expense. General contractor shall be responsible to confirm all patches are appropriate and maintain the required fire rating.
4. Equipment unit dimensions (for all trades) are for product description only. Verify exact size and clearances with manufacturer.
5. All dimensions pertaining to mechanical or electrical services or equipment shall be verified with their respective trades.
6. Provide metal blocking at all wall-mounted equipment, door stops, accessories, etc., unless noted otherwise.
7. For fire ratings, refer to Code Analysis on Sheet G0.01, the Wall Types on A5.00, and the Floor-Ceiling-Roof Assemblies on A5.05.
8. General contractor to coordinate proposed locations & sizes of all chases for mechanical shafts with subcontractor & architect, prior to installation.
9. Dimensions are taken to (unless noted otherwise):
-face of stud at interior walls
-face of stud at corridor walls
-centerline of party walls
-outside face of sheathing (F.O.S.) or face of masonry (F.O.S.) at exterior walls.
10. Plumbing pipes to have escutcheon plates.
11. Wall types are designated with see sheet A5.00 for wall types.
12. See enlarged plans for wall types, door tags, and additional dimensions at stairs, elevators, unit plans, and other areas with enlarged floor plans.
13. See sheet A7.10 for Room Finish Schedule.
14. See sheet A7.00 for Door Types and Door Schedules.
15. See sheet A5.30 for window types, and Building Elevations for window locations.
16. See A6.01 for typical interior wall framing and acoustic sealant details.
17. Concealed spaces shall be filled full w/ insulation or protected using other methods listed in IBC.
18. Finish surface of stoops shall slope 1/4" per foot down and away from building and perpendicular to the door it serves.
19. See building elevations for window types.
20. All furniture provided by owner.
21. Washers and dryers shall be provided by owner, installed by contractor.



2 WEST BUILDING MEZZANINE PLAN

1/8" = 1'-0"



1 WEST BUILDING FOURTH FLOOR PLAN

1/8" = 1'-0"

Carleton College

No	Date	Revision
05-01-2008		100% COORDINATION REVIEW
03-24-2008		DESIGN DEVELOPMENT
03-04-2008		NORTHFIELD C.U.P. SUBMITTAL
01-21-2008		SCHEMATIC DESIGN

PRELIMINARY
NOT FOR CONSTRUCTION
05-01-2008

COPYRIGHT 2008 BY LHB, INC. ALL RIGHTS RESERVED

PROJECT TITLE:
CARLETON COLLEGE STUDENT RESIDENCE

1 North College Street
Northfield, MN 55057

DRAWING TITLE:
WEST BUILDING FOURTH FLOOR PLAN

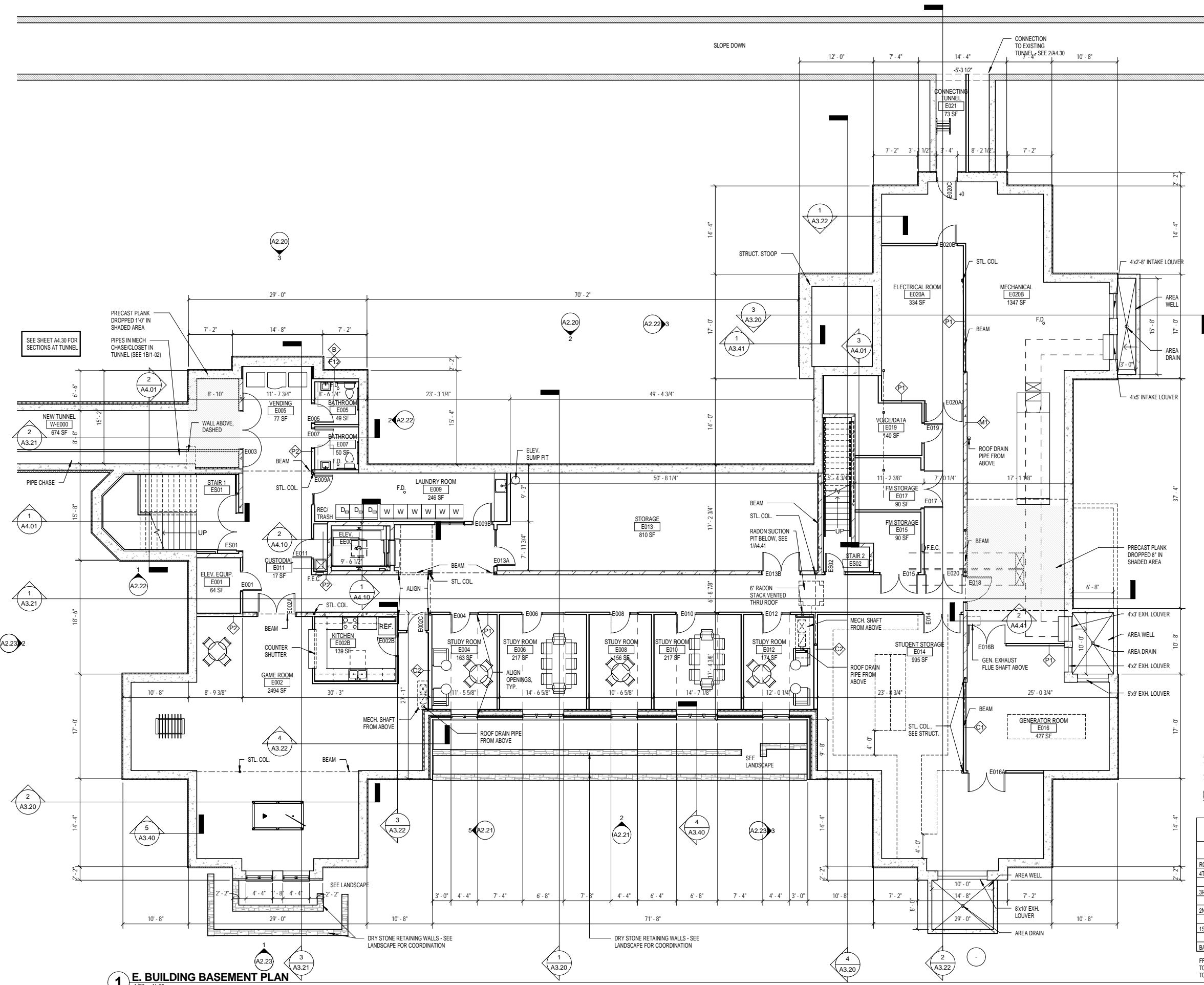
FILE:
DRAWN BY: Author
CHECKED BY: Checker
PROJ. NO: 070353
DRAWING NO:

A1.14



GENERAL NOTES:

- Notify architect immediately of any discrepancies.
- Structural, mechanical, and electrical symbols may differ from architectural. See respective sections and/or drawings for definitions.
- Whenever openings are cut through fire rated partitions, it shall be the responsibility of the contractor who made the cut to patch and repair any openings to maintain the integrity of the fire rating. Fireproofing shall be ungrouted. Any contractor penetrating the fireproofing shall be required to replace fireproofing to the original condition and fire rating, at their expense. General contractor shall be responsible to confirm all patches are appropriate and maintain the required fire rating. Equipment unit dimensions (for all trades) are for product description only. Verify exact size and clearances with manufacturer.
- All dimensions pertaining to mechanical or electrical services or equipment shall be verified with their respective trades.
- Provide metal blocking at all wall-mounted equipment, door stops, accessories, etc., unless noted otherwise.
- For fire ratings, refer to Code Analysis on Sheet G0.01, the Wall Types on A5.00, and the Floor-Ceiling-Roof Assemblies on A5.05.
- General contractor to coordinate proposed locations & sizes of all chases for mechanical shafts with subcontractor & architect, prior to installation.
- Dimensions are taken to (unless noted otherwise):
-face of stud at interior walls
-face of stud at exterior walls
-centerline of party walls
-outside face of sheathing (F.O.S.) or face of masonry (F.O.S.) at exterior walls.
- Plumbing pipes to have escutcheon plates.
- Wall types are designated with \diamond , see sheet A5.00 for wall types.
- See enlarged plans for wall types, door tags, and additional dimensions at stairs, elevators, unit plans, and other areas with enlarged floor plans.
- See sheet A7.10 for Room Finish Schedule.
- See sheet A7.00 for Door Types and Door Schedules.
- See sheet A5.30 for window types, and Building Elevations for window locations.
- See A6.01 for typical interior wall framing and acoustic sealant details.
- Concealed spaces shall be filled full w/ insulation or protected using other methods listed in IBC.
- Finish surface of stoops shall slope 1/4" per foot down and away from building and perpendicular to the door it serves. See building elevations for window types.
- All furniture provided by owner.
- Washers and dryers shall be provided by owner, installed by contractor.



1 E. BUILDING BASEMENT PLAN
1/8" = 1'-0"

Carleton College

No	Date	Revision
05-01-2008		100% COORDINATION
03-24-2008		REVIEW DESIGN DEVELOPMENT
03-04-2008		NORTHFIELD C.U.P. SUBMITTAL
01-21-2008		SCHEMATIC DESIGN

PRELIMINARY
NOT FOR CONSTRUCTION
05-01-2008

COPYRIGHT 2008 BY LHB, INC. ALL RIGHTS RESERVED

PROJECT TITLE:
**CARLETON COLLEGE
STUDENT RESIDENCE**

1 North College Street
Northfield, MN 55057

DRAWING TITLE:
**EAST BUILDING
BASEMENT PLAN**

PLAN LEGEND

- CMU WALL
- METAL FRAMED WALL
- I.C.F. WALL

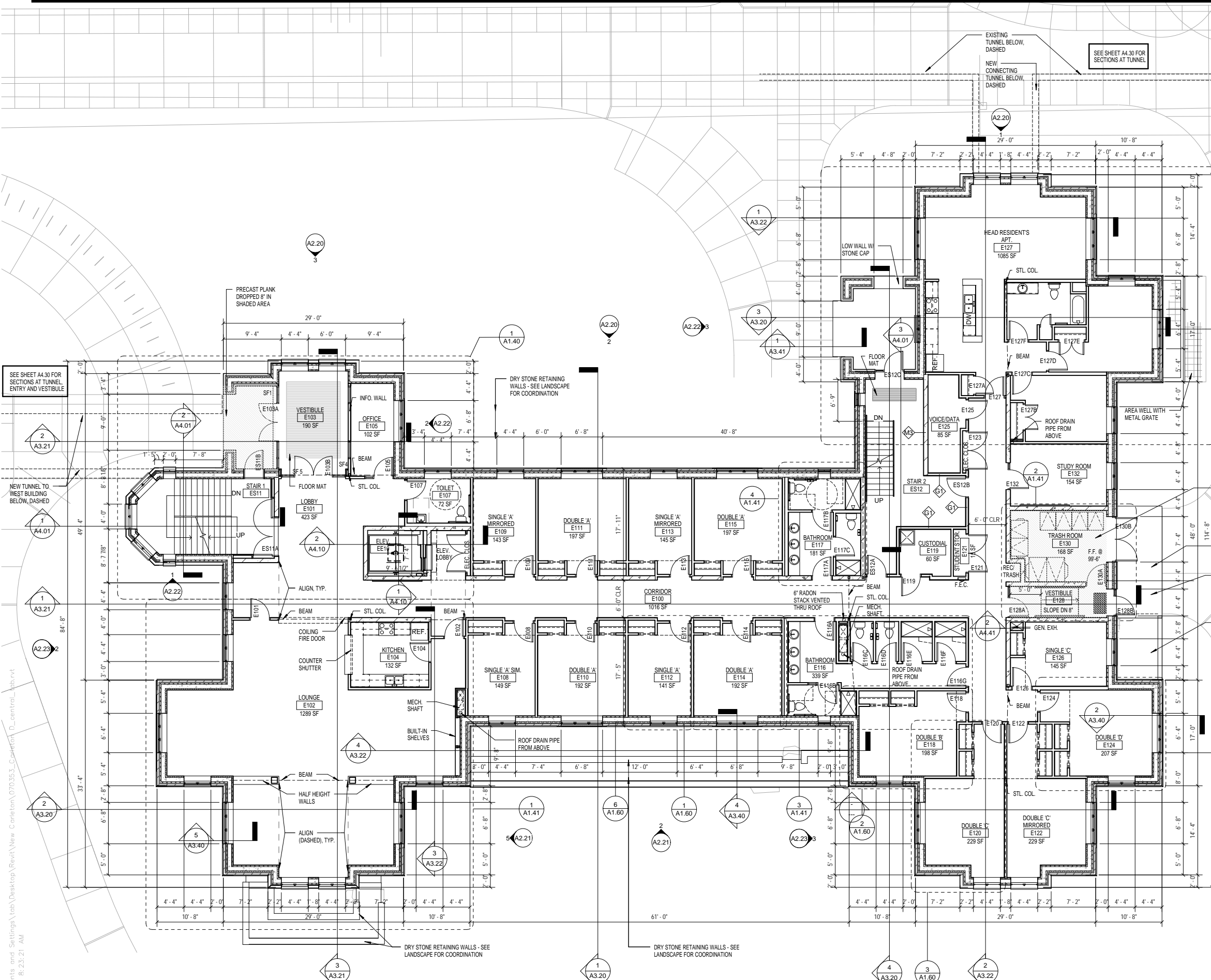
FLOOR ELEVATIONS:

	WEST BUILDING	EAST BUILDING
ROOF BRG.	140'-8"	141'-4"
4TH FLR.	131'-7"	132'-3"
TOP	131'-4"	132'-0"
3RD FLR.	121'-7"	122'-3"
TOP	121'-4"	122'-0"
2ND FLR.	111'-7"	112'-3"
TOP	111'-4"	112'-0"
1ST FLR.	100'-3" (= 942.50 CIVIL)	100'-3" (= 941.84 CIVIL)
TOP	100'-0" (= 942.25 CIVIL)	100'-0" (= 941.59 CIVIL)
BASEMENT TOS	89'-4" (= 931.58 CIVIL)	88'-0" (= 929.59 CIVIL)

FFE = FINISHED FLOOR ELEVATION
TOP = TOP OF PLANK
TOS = TOP OF SLAB



C:\Documents and Settings\tob\Desktop\Revit\New_Carleton\070353_Carleton_D_centrol_tob.rvt 4/30/2008 8:23:43 AM



GENERAL NOTES:

1. Notify architect immediately of any discrepancies.
2. Structural, mechanical and electrical symbols may differ from architectural. See respective sections and/or drawings for definitions.
3. Wherever openings are cut through fire rated partitions, it shall be the responsibility of the contractor who made the cut to patch and repair any openings to maintain the integrity of the fire rating. Fireproofing shall be unperished. Any contractor penetrating the fireproofing shall be required to replace fireproofing to the original condition and fire rating, at their expense. General contractor shall be responsible to confirm all patches are appropriate and maintain the required fire rating. Equipment unit dimensions (for all trades) are for product description only. Verify exact size and clearances with manufacturer.
4. All dimensions pertaining to mechanical or electrical services or equipment shall be verified with their respective trades.
5. Provide metal blocking at all wall-mounted equipment, door stops, accessories, etc. unless noted otherwise.
6. For fire ratings, refer to Code Analysis on Sheet G0.01, the Wall Types on A5.00, and the Floor-Ceiling-Roof Assemblies on A5.05.
7. General contractor to coordinate proposed locations & sizes of all chases for mechanical shafts with subcontractor & architect, prior to installation.
8. Dimensions are taken to (unless noted otherwise):
 -face of stud at interior walls
 -face of stud at exterior walls
 -centerline of party walls
 -outside face of sheathing (F.O.S.) or face of masonry (F.O.S) at exterior walls
9. Plumbing pipes to have escutcheon plates.
10. Wall types are designated with \diamond , see sheet A5.00 for wall types.
11. See enlarged plans for wall types, door tags, and additional dimensions at stairs, elevators, unit plans, and other areas with enlarged floor plans.
12. See sheet A7.10 for Room Finish Schedule.
13. See sheet A7.00 for Door Types and Door Schedules.
14. See sheet A5.30 for window types, and Building Elevations for window locations.
15. See A6.01 for typical interior wall framing and acoustic sealant details.
16. Concealed spaces shall be filled full w/ insulation or protected using other methods listed in IBC.
17. Finish surface of stoops shall slope 1/4" per foot down and away from building and perpendicular to the door it serves.
18. See building elevations for window types.
19. All furniture provided by owner.
20. Washers and dryers shall be provided by owner, installed by contractor.

Carleton College

No	Date	Revision
05-01-2008	100%	COORDINATION
03-24-2008	REVIEW	DESIGN DEVELOPMENT
03-04-2008	NORTHFIELD C.U.P.	SUBMITTAL
01-21-2008		SCHEMATIC DESIGN

PRELIMINARY
NOT FOR CONSTRUCTION
05-01-2008

COPYRIGHT 2008 BY LHB, INC. ALL RIGHTS RESERVED

PROJECT TITLE:
**CARLETON COLLEGE
STUDENT RESIDENCE**

1 North College Street
Northfield, MN 55057

DRAWING TITLE:
**EAST BUILDING FIRST
FLOOR PLAN**

FILE:
DRAWN BY: Author
CHECKED BY: Checker
PROJ. NO: 070353
DRAWING NO: **A1.21**

PLAN LEGEND

- CMU WALL
- METAL FRAMED WALL
- I.C.F. WALL

FLOOR ELEVATIONS:

	WEST BUILDING	EAST BUILDING
ROOF BRG.	140'-8"	141'-4"
4TH FLR. FFE	131'-7"	132'-3"
TOP	131'-4"	132'-0"
3RD FLR. FFE	121'-7"	122'-3"
TOP	121'-4"	122'-0"
2ND FLR. FFE	111'-7"	112'-3"
TOP	111'-4"	112'-0"
1ST FLR. FFE	100'-3" (= 942.50' CIVIL)	100'-3" (= 941.84' CIVIL)
TOP	100'-0" (= 942.25' CIVIL)	100'-0" (= 941.58' CIVIL)
BASEMENT TOS	89'-4" (= 931.58' CIVIL)	88'-0" (= 929.59' CIVIL)

FFE = FINISHED FLOOR ELEVATION
TOP = TOP OF PLANK
TOS = TOP OF SLAB

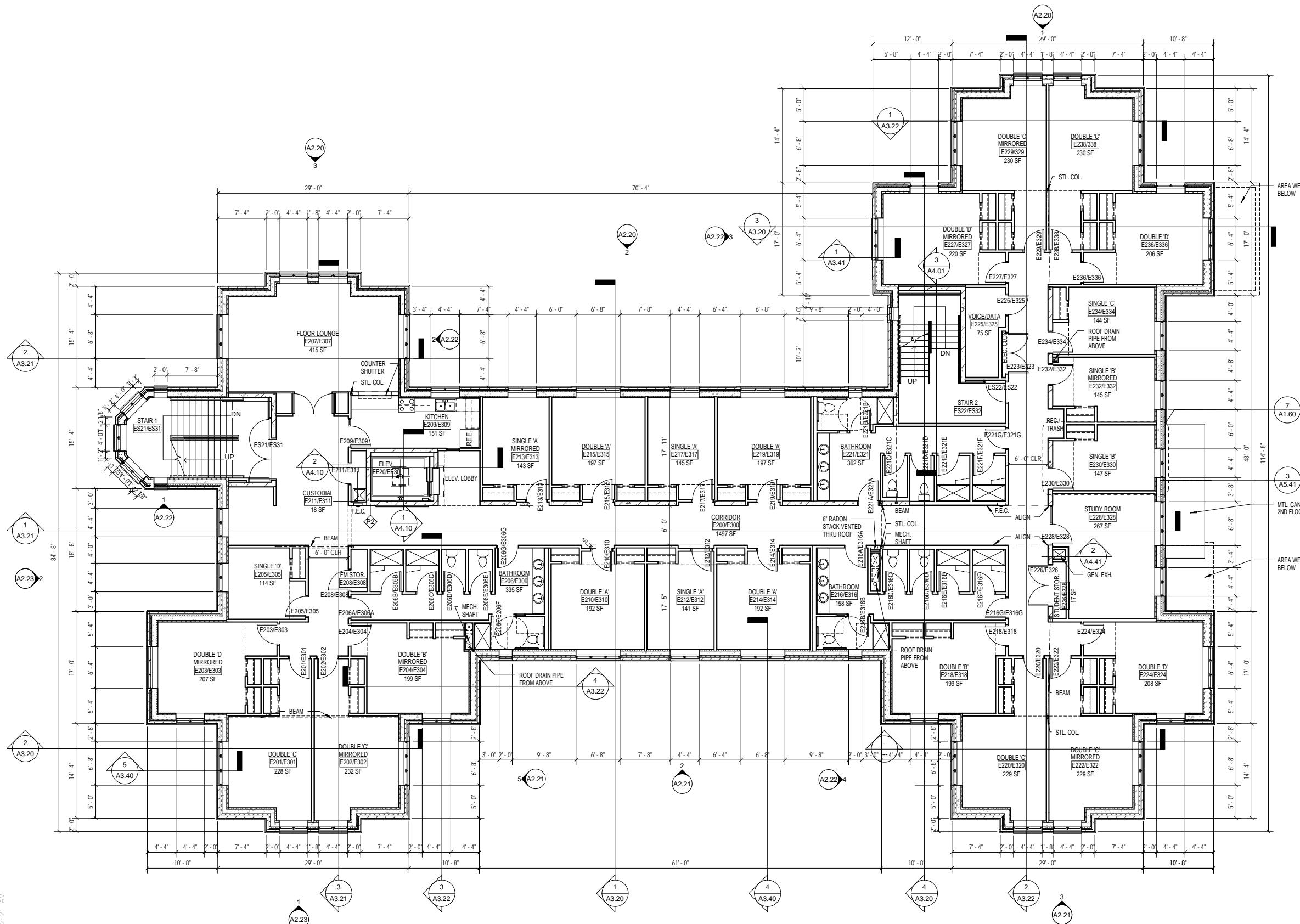
1 E. BUILDING FIRST FLOOR PLAN
1/8" = 1'-0"

C:\Documents and Settings\tob\Desktop\Revit\New Carleton\070353_1_Carleton_D_central_lab.rvt
4/30/2008 8:23:21 AM



GENERAL NOTES:

- Notify architect immediately of any discrepancies.
- Structural, mechanical, and electrical symbols may differ from architectural. See respective sections and/or drawings for definitions.
- Wherever openings are cut through fire rated partitions, it shall be the responsibility of the contractor who made the cut to patch and repair any openings to maintain the integrity of the fire rating. Fireproofing shall be unperished. Any contractor penetrating the fireproofing shall be required to replace fireproofing to the original condition and fire rating, at their expense. General contractor shall be responsible to confirm all patches are appropriate and maintain the required fire rating.
- Equipment unit dimensions (for all trades) are for product description only. Verify exact size and clearances with manufacturer.
- All dimensions pertaining to mechanical or electrical services or equipment shall be verified with their respective trades.
- Provide metal blocking at all wall-mounted equipment, door stops, accessories, etc., unless noted otherwise.
- For fire ratings, refer to Code Analysis on Sheet G0.01, the Wall Types on A5.00, and the Floor-Ceiling-Roof Assemblies on A5.05.
- General contractor to coordinate proposed locations & sizes of all chases for mechanical shafts with subcontractor & architect, prior to installation.
- Dimensions are taken to (unless noted otherwise):
-face of stud at interior walls
-centerline of party walls
-outside face of sheathing (F.O.S.) or face of masonry (F.O.S.) at exterior walls.
- Plumbing pipes to have escutcheon plates.
- Wall types are designated with . See sheet A5.00 for wall types.
- See enlarged plans for wall types, door tags, and additional dimensions at stairs, elevators, unit plans, and other areas with enlarged floor plans.
- See sheet A7.10 for Room Finish Schedule.
- See sheet A7.00 for Door Types and Door Schedules.
- See sheet A5.30 for window types, and Building Elevations for window locations.
- See A6.01 for typical interior wall framing and acoustic sealant details.
- Concealed spaces shall be filled full w/ insulation or protected using other methods listed in IBC.
- Finish surface of stoops shall slope 1/4" per foot down and away from building and perpendicular to the door it serves.
- See building elevations for window types.
- All furniture provided by owner.
- Washers and dryers shall be provided by owner, installed by contractor.



Carleton College

No	Date	Revision
	05-01-2008	100% COORDINATION REVIEW
	03-24-2008	DESIGN DEVELOPMENT
	03-04-2008	NORTHFIELD C.U.P. SUBMITTAL
	01-21-2008	SCHEMATIC DESIGN

PRELIMINARY
NOT FOR CONSTRUCTION
05-01-2008

COPYRIGHT 2008 BY LHB, INC. ALL RIGHTS RESERVED
PROJECT TITLE:
**CARLETON COLLEGE
STUDENT RESIDENCE**

1 North College Street
Northfield, MN 55057
DRAWING TITLE:
**EAST BUILDING
SECOND & THIRD
FLOOR PLANS**

PLAN LEGEND

- CMU WALL
- METAL FRAMED WALL
- I.C.F. WALL

1 E. BUILDING SECOND FLOOR PLAN & THIRD FLOOR PLAN
1/8" = 1'-0"



C:\Documents and Settings\tob\Desktop\Revit\New_Carleton\070353_Carleton_D_centrol_tob.rvt
4/30/2008 8:22:21 AM

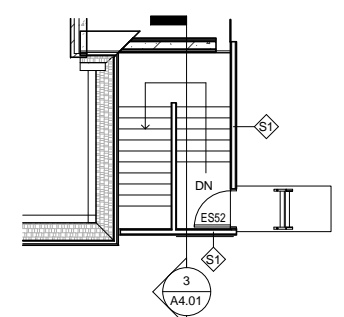


PLAN LEGEND

- CMU WALL
- METAL FRAMED WALL
- I.C.F. WALL

GENERAL NOTES:

1. Notify architect immediately of any discrepancies.
2. Structural, mechanical, and electrical symbols may differ from architectural. See respective sections and/or drawings for definitions.
3. Wherever openings are cut through fire rated partitions, it shall be the responsibility of the contractor who made the cut to patch and repair any openings to maintain the integrity of the fire rating. Fireproofing shall be completed. Any contractor penetrating the fireproofing shall be required to replace fireproofing to the original condition and fire rating, at their expense. General contractor shall be responsible to confirm all patches are appropriate and maintain the required fire rating description only. Verify exact size and clearances with manufacturer.
5. All dimensions pertaining to mechanical or electrical services or equipment shall be verified with their respective trades.
6. Provide metal blocking at all wall-mounted equipment, door stops, accessories, etc., unless noted otherwise.
7. For fire ratings, refer to Code Analysis on Sheet G0.01, the Wall Types on A5.00, and the Floor-Ceiling-Roof Assemblies on A5.05.
8. General contractor to coordinate proposed locations & sizes of all chases for mechanical shafts with subcontractor & architect, prior to installation.
9. Dimensions are taken to (unless noted otherwise):
-face of stud at interior walls
-face of stud at exterior walls
-centerline of party walls
-outside face of sheathing (F.O.S.) or face of masonry (F.O.S.) at exterior walls.
10. Plumbing pipes to have escutcheon plates.
11. Wall types are designated with see sheet A5.00 for wall types.
12. See enlarged plans for wall types, door tags, and additional dimensions at stairs, elevators, unit plans, and other areas with enlarged floor plans.
13. See sheet A7.10 for Room Finish Schedule.
14. See sheet A7.00 for Door Types and Door Schedules.
15. See sheet A5.30 for window types, and Building Elevations for window locations.
16. See A6.01 for typical interior wall framing and acoustic sealant details.
17. Concealed spaces shall be filled full w/ insulation or protected using other methods listed in IBC.
18. Finish surface of stoops shall slope 1/4" per foot down and away from building and perpendicular to the door it serves.
19. See building elevations for window types.
20. All furniture provided by owner.
21. Washers and dryers shall be provided by owner, installed by contractor.



2 EAST BUILDING ATTIC PLAN
1/8" = 1'-0"

