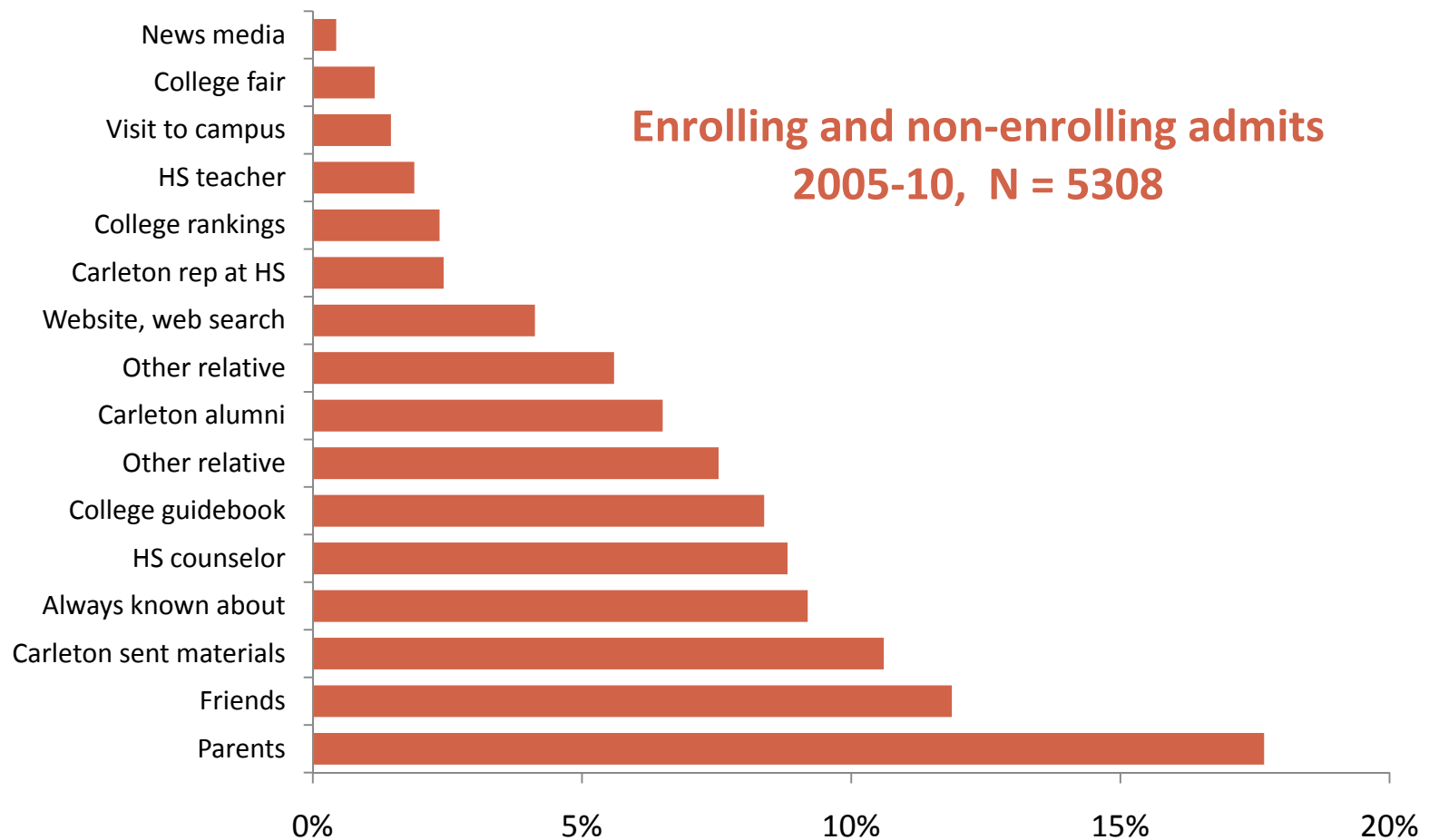


# How Did You First Hear About Carleton?

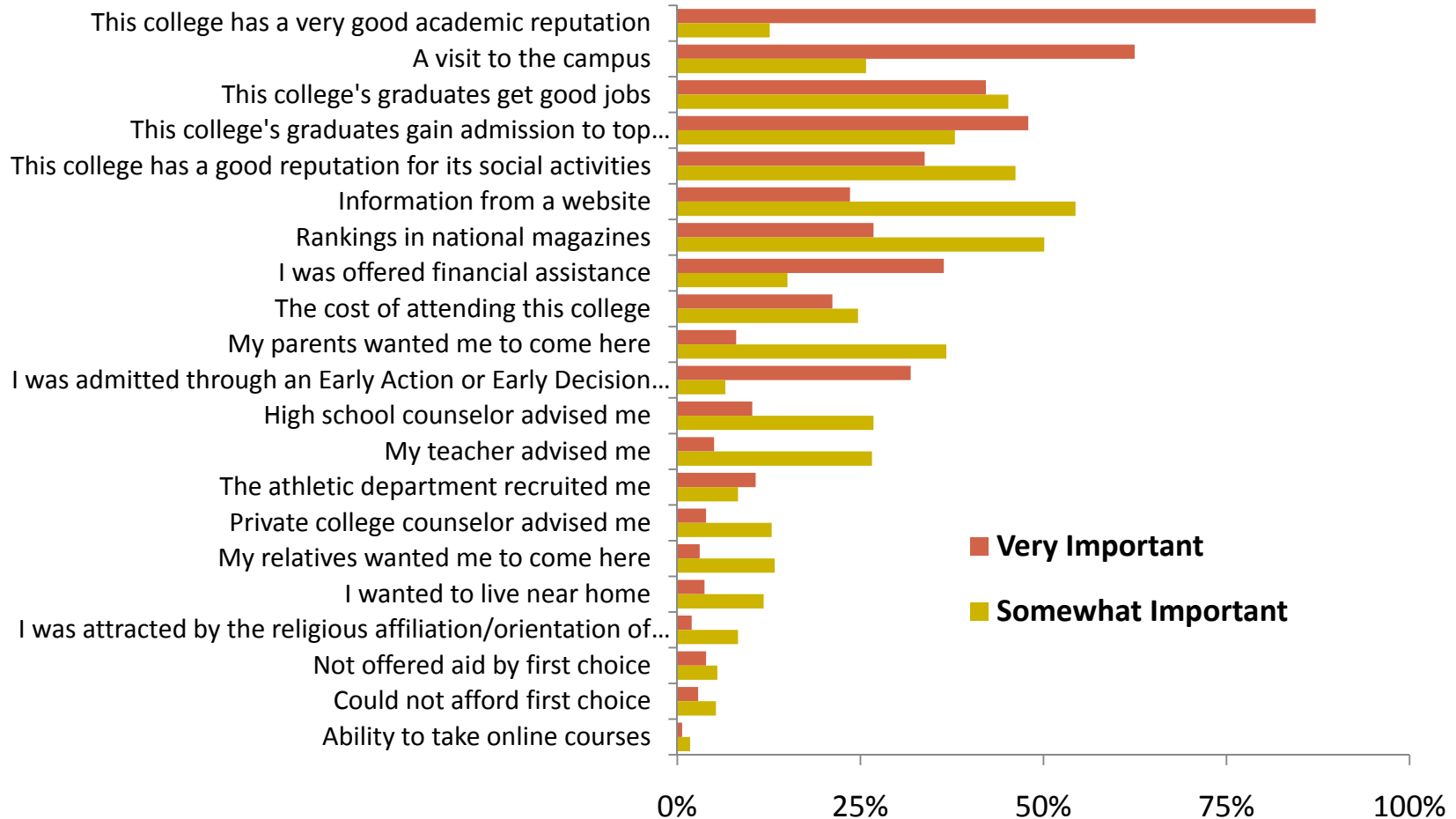
13



Source: Admitted Student Questionnaire Plus 2005-10, Admissions Office.

# Factors in Choosing Carleton

14

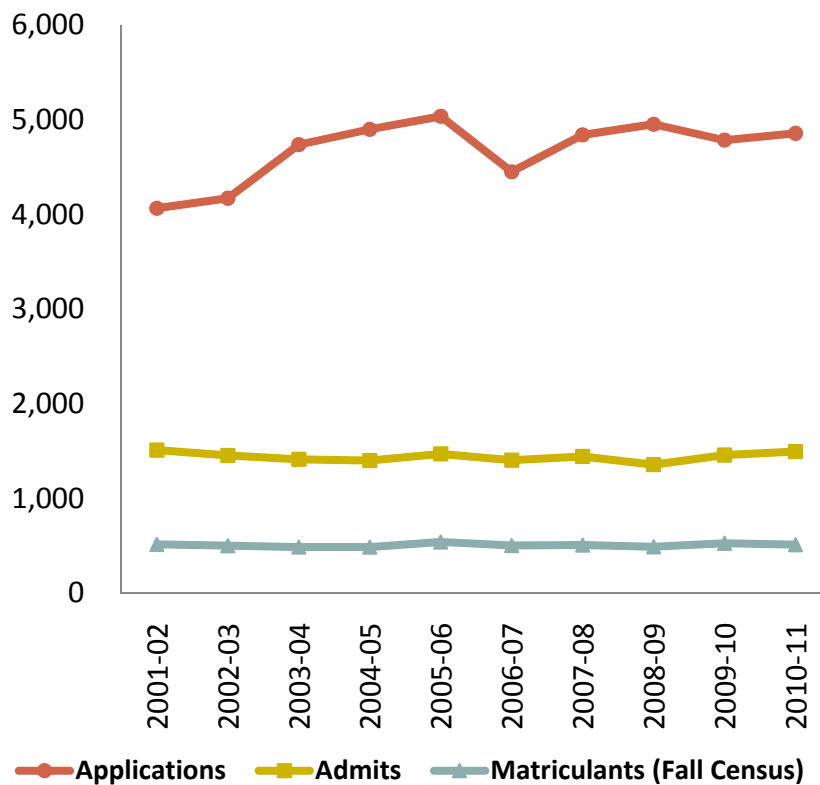


Source: CIRP Freshman Survey 2010.

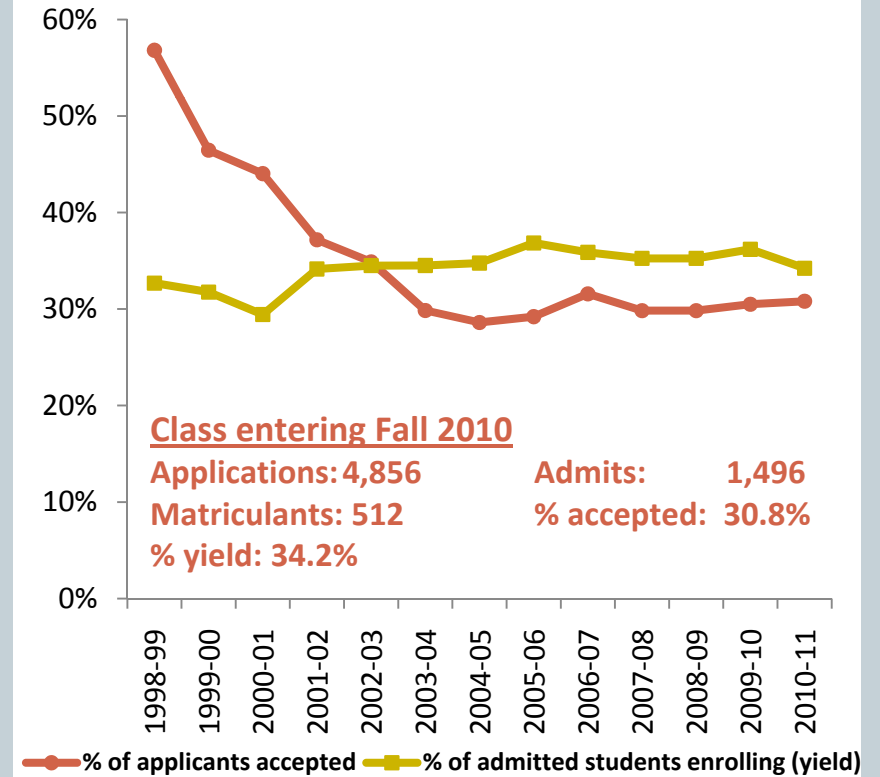
# Admissions Trends

15

## Applications, Accepted, Matriculants



## Admit Rate and Yield



Note: First-time, first-year students.

Source: Institutional Research and Assessment.

# Test Scores and HS Class Rank

Class Entering Fall of 2010

16

Test Score Ranges	25 <sup>th</sup> Percentile	75 <sup>th</sup> Percentile
SAT Critical Reading	650	750
SAT Math	650	750
SAT Writing	650	740
ACT Composite	29	33

**68% of class submitted SATs; 58% submitted ACTs**

High School Class Rank	% of entering class
Top 5%	60%
Top 10%	77%
Top 25%	95%
Top 50%	100%
% of class with a HS class rank	38%

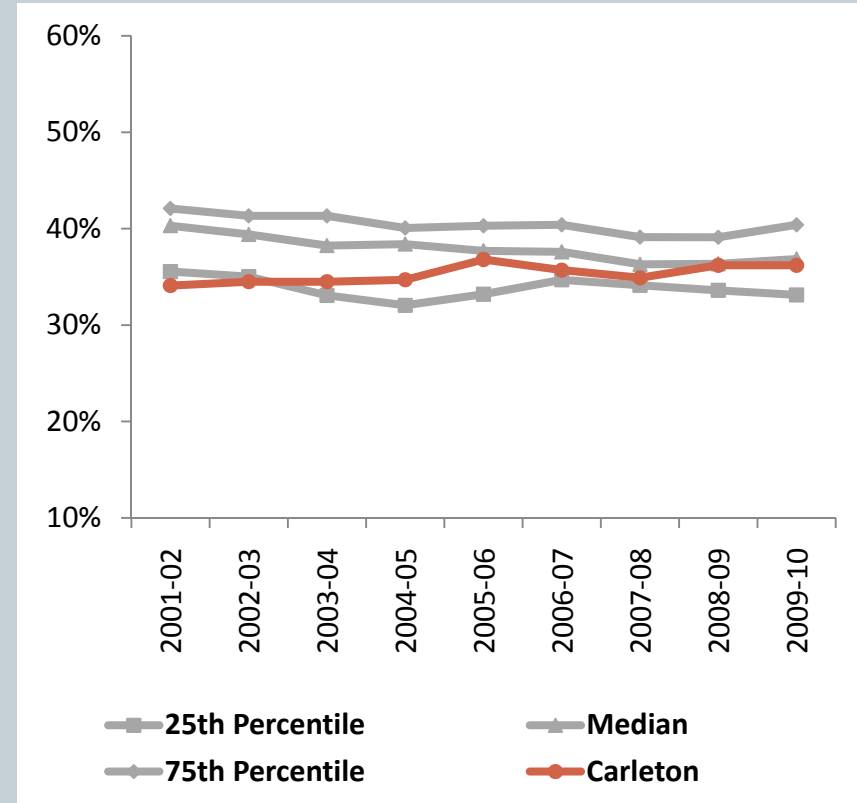
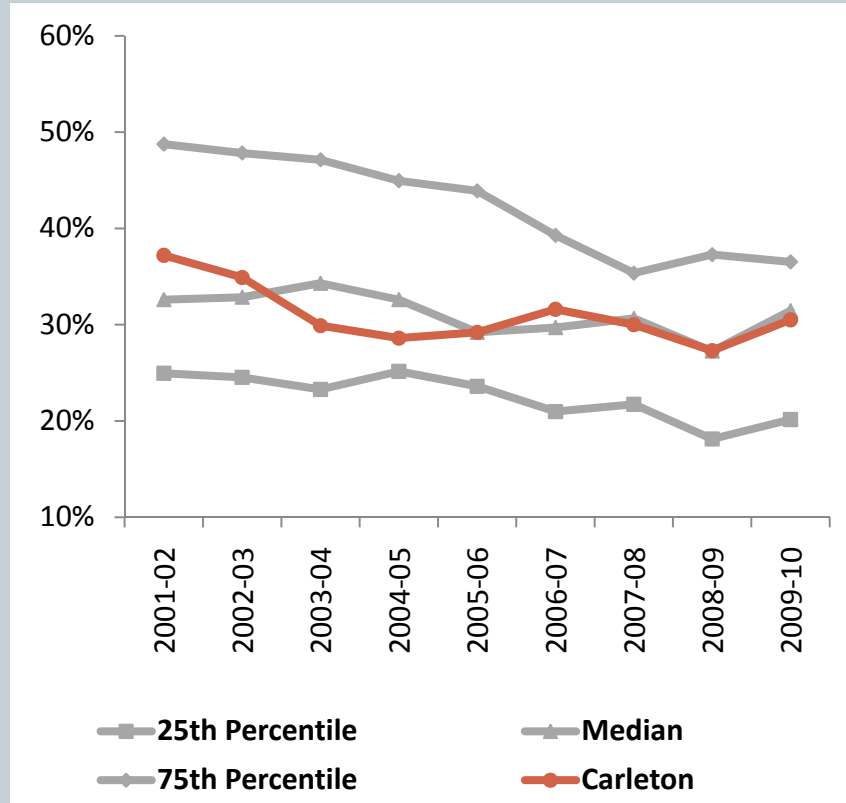
# Admissions Benchmarks

Carleton and 16 Core Peers

17

## Admit Rate

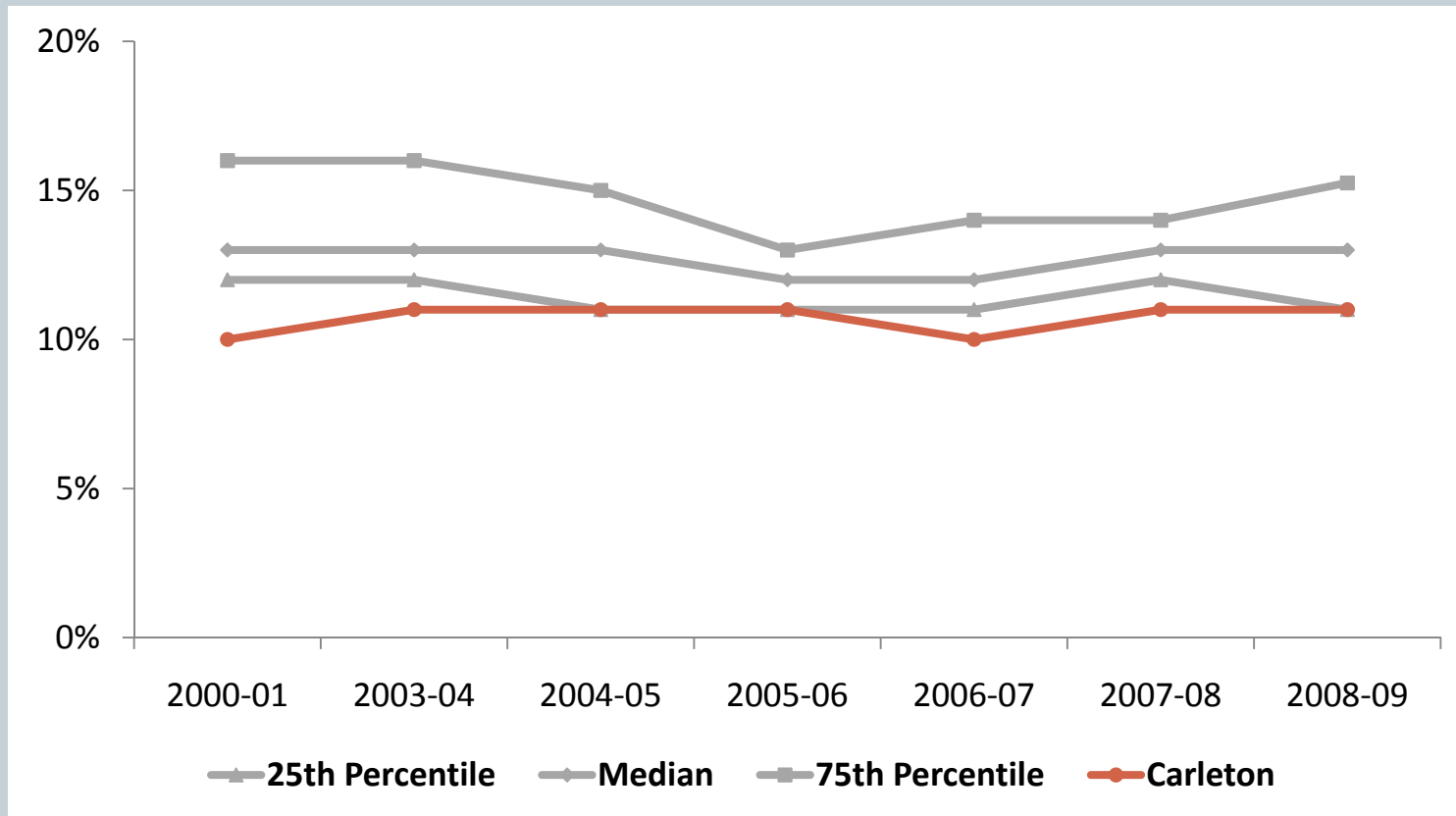
## Yield



Source: AGB Benchmarking Service.

# Percent of Fall Enrollment Receiving Pell Grants

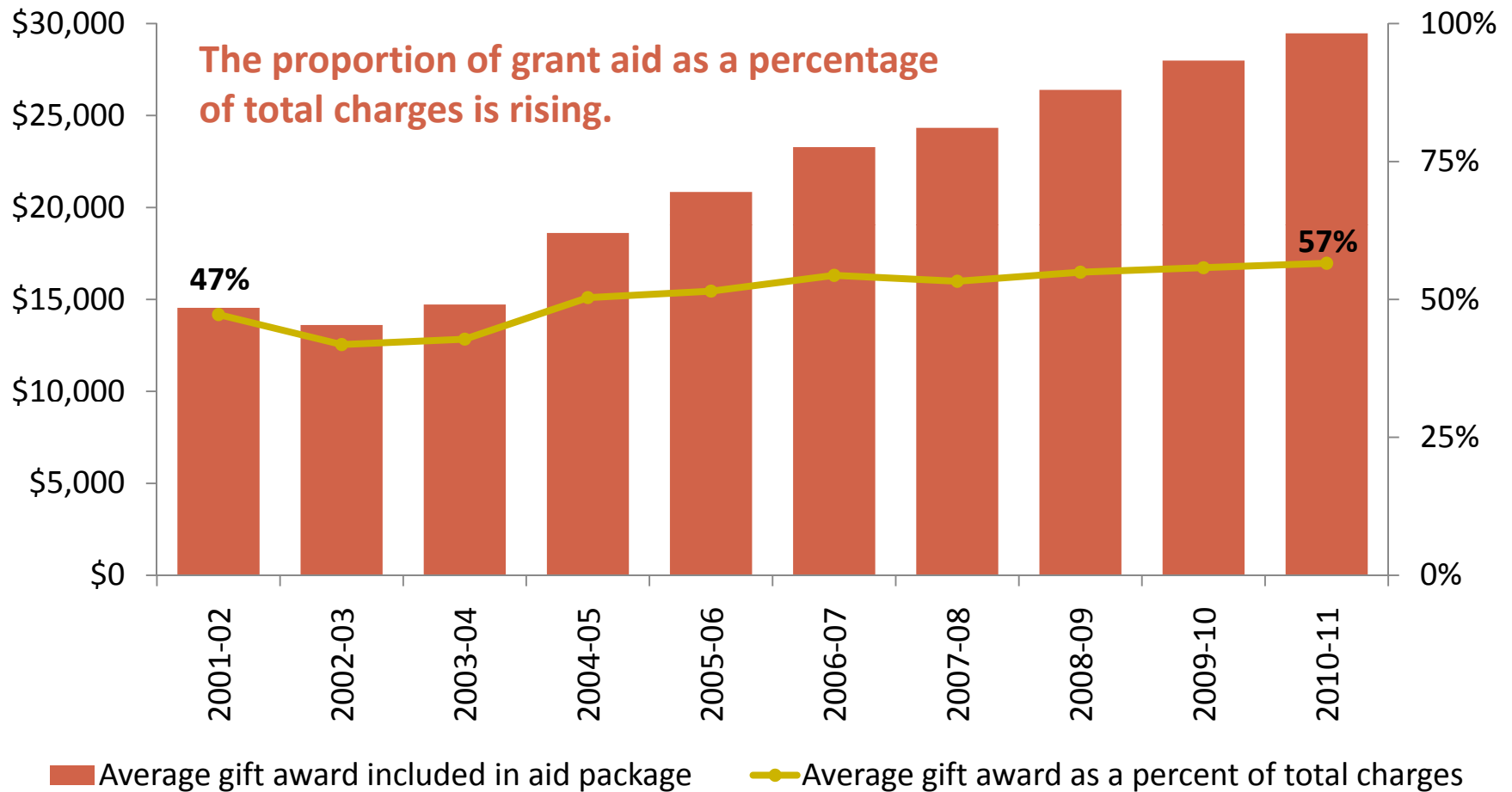
Carleton and 16 Core Peers



Receiving a Pell Grants is sometimes used as a rough proxy for measuring low income.

# Carleton Institutional Grant Aid

19

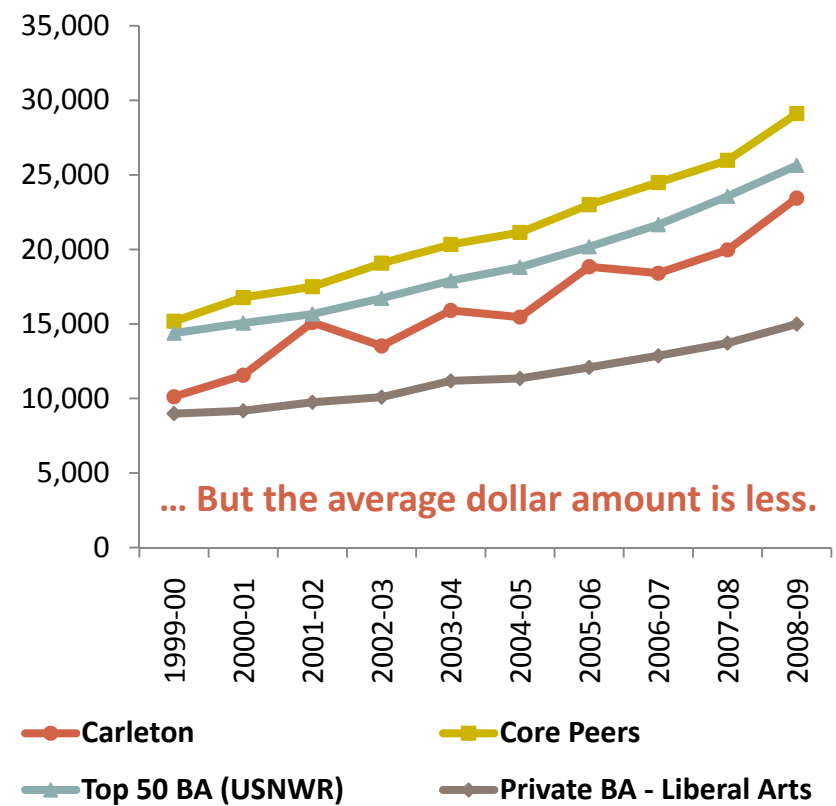
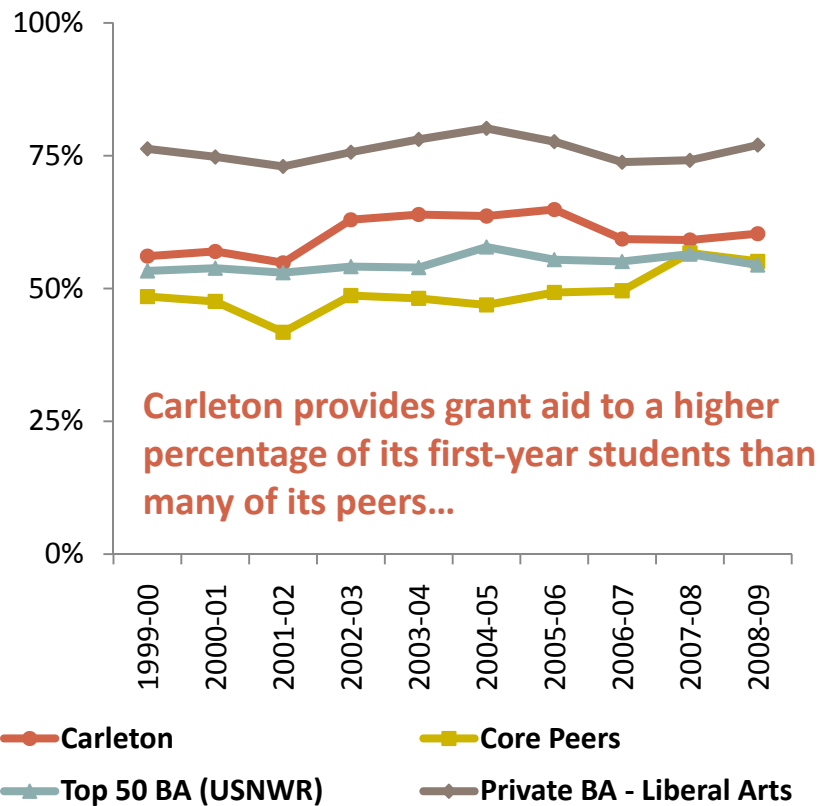


Grant aid for all undergraduates. Source: Institutional Research Office, Common Data Set.

# Institutional Grant Awards

## Percent Receiving First-Year cohort

## Average Amount First-year cohort



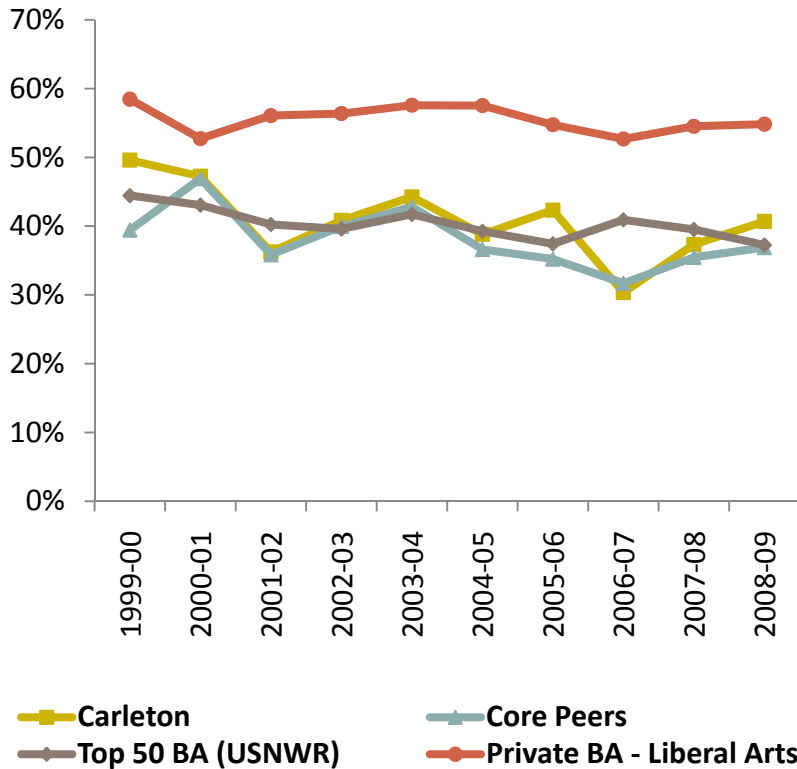
Source: AGB Benchmarking Service, IPEDS Financial Aid surveys.



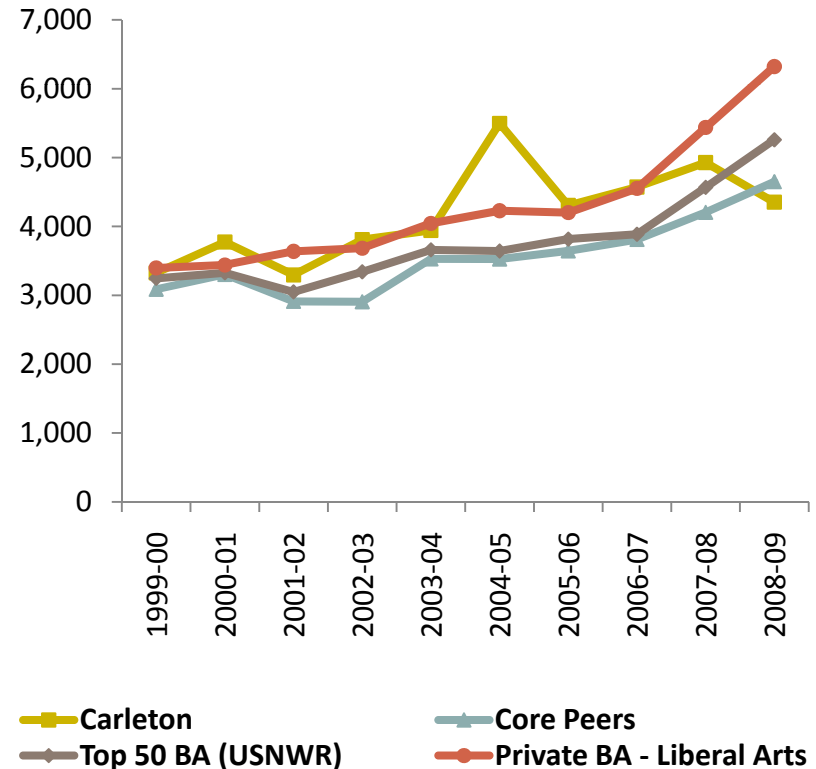
# Loan Aid

21

## Percent Receiving First-Year Cohort



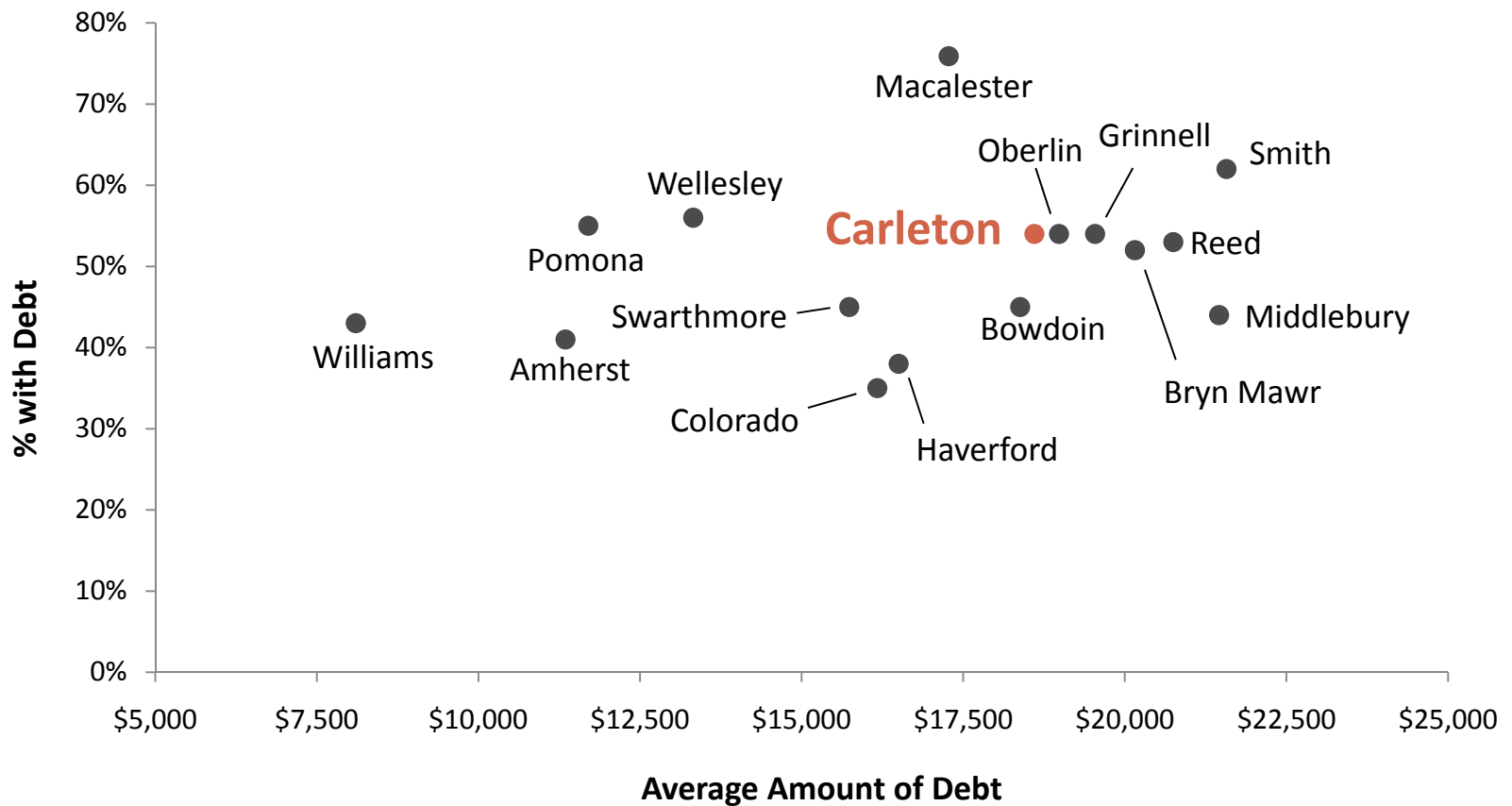
## Average Amount First-Year Cohort



Source: AGB Benchmarking Service, IPEDS Financial Aid surveys.

# Graduate Debt Class of 2009

22



Source: Institutional Research and Assessment. (The average national debt for 4-year privates is over \$23,000.)