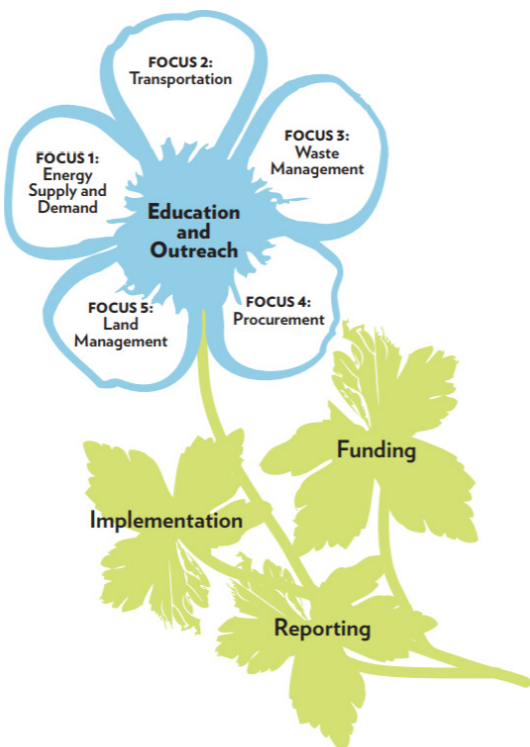


Energy & Sustainability Department Annual Report 2017-2018

We are dedicated to investigating and promoting awareness of the current and future impacts of our actions in order to foster responsibility for these human and natural communities.

- Carleton's Environmental Statement of Principles, 2001



The flower used for the layout of Carleton's Climate Action Plan is a Geranium Maculatum, commonly found in the Cowling Arboretum.

Sustainability by the Numbers:

5.8 million: Pages of paper printed last year

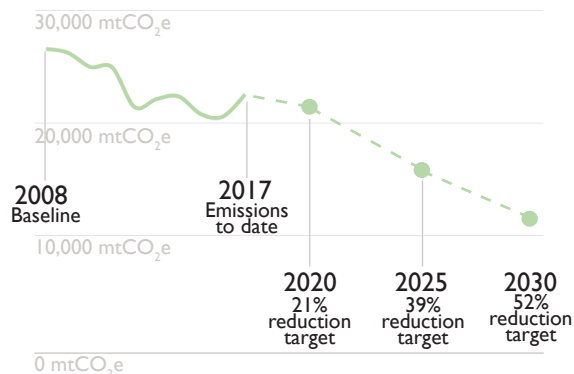
33rd: Carleton's rank in the 2017 Recycle-mania competition

23 tons: Leftover from students at move-out for Lighten Up

97%: Amount of waste diverted from the landfill at commencement

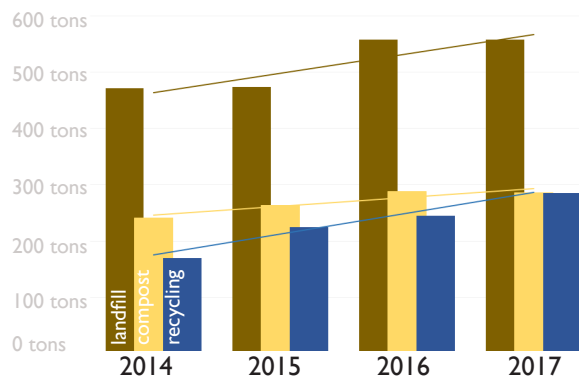
10: The number of courses that partnered with us last year

Carbon Emissions:



Carbon emissions up from previous year due to the opening of the new Weitz Performance Commons.

Waste:



Waste in all areas has been trending upward, we would like to see landfill decrease as we increase recycling and composting on campus.

Martha Larson
Manager of Campus Energy & Sustainability
507-222-7893 • mlarson@carleton.edu

Alex Miller
Sustainability Program Coordinator
507-222-6004 • amiller3@carleton.edu

Sustainability Lifestyle Tips

We need your help!

It takes all of us to reduce emissions and lessen our impact.

For questions, email sustainability@carleton.edu



Use common spaces

Instead of studying or hanging out in your room, utilize spaces that are already being lit and heated, like the Libe and Sayles.

BYOE (bring your own everything)

Ditch the disposables and carry your own waterbottle, coffee thermos (for mug club!) and silverware to reduce your need for one-use items.

Eat locally and low on the food chain

Bon App has local and vegetarian/vegan options at every dining facility- ask for a sample today! Eating local & low reduces emissions from transportation and animal production.

Ride, don't drive

Hiawathaland stops on campus and will scoot you around town for free! Use Northfield Lines to get up to the Twin Cities.

Burn fat, not fossil fuels

Download the Zagster BikeShare App and start riding! BikeShare stations are located at both Sayles and the Rec Center.

Educate yo self

Brush up on sustainability and learn more on our website, go.carleton.edu/sustainability and share your knowledge with your friends!

Thank you for doing your part!

~The STAs (Sustainability Assistants)



Martha Larson
Manager of Campus Energy & Sustainability
507-222-7893 • mlarson@carleton.edu

Alex Miller
Sustainability Program Coordinator
507-222-6004 • amiller3@carleton.edu